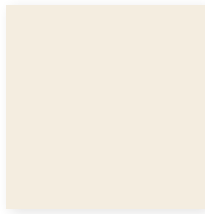


# ALPOLIC® ARCHITECTURAL STANDARD STOCK COLORS AND FINISHES

## 30 Year Warranty Stock Colors

Stocked in 4mm thick panels

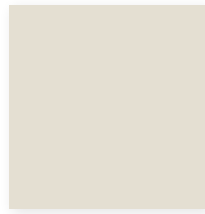
### SOLID



**Bone White**  
4-BNT-30  
LRV 78.50/SRI 82 - Cool



**Oyster**  
4-CRT-30  
LRV 72.46/SRI 82 - Cool



**Mist White**  
4-MST-30  
LRV 69.96/SRI 75 - Cool



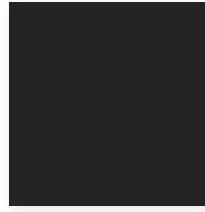
**Aluminum Grey**  
4-AGT-30  
LRV 31.60/SRI 26



**BGY Grey**  
4-BGY-50  
LRV 10.41/SRI 7



**Bronze**  
4-JBR-30  
LRV 3.34/SRI 2



**TOB Black**  
4-TOB-15  
LRV 1.01/SRI 0

### MICA



**Mica Platinum**  
4-OPT-50  
LRV 30.88/SRI 53 - Cool



**Mica Anodic Clear**  
4-MNC-30  
LRV 34.43/SRI 56 - Cool



**Mica Champagne**  
4-MCU-30  
LRV 22.61/SRI 38 - Cool



**Mica Grey**  
4-MZG-50  
LRV 7.95/SRI 14



**Mica MFS Grey**  
4-MFS-30  
LRV 13.41

### METALLIC



**BSX Silver Metallic**  
4-BSX-30  
LRV 30.94/SRI 71 - Cool



**Silver Metallic**  
4-SMX-30  
LRV 36.59/SRI 63 - Cool



**Champagne Metallic**  
4-CMX-30  
LRV 31.19/SRI 59 - Cool



**Medium Bronze Metallic**  
4-MBX-30  
LRV 31.20/SRI 40 - Cool



**Dark Copper Metallic**  
4-DCX-30  
LRV 15.09/SRI 47 - Cool

## Premium Stock Finishes

For Warranty Details call 800.422.7270

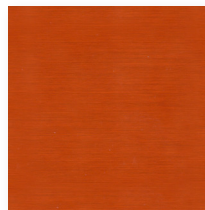
### NATURAL METALS



**Stainless**  
4-4HL  
LRV 21.84/SRI 34 - Cool

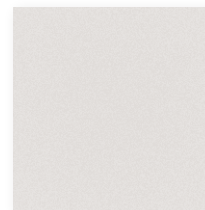


**Zinc**  
4-AZZ  
LRV 21.51/SRI 0



**Copper**  
4-C12  
LRV 5.03/SRI 55 - Cool

### ANODIZED



**Clear**  
4-CLR  
LRV 34.31/SRI 84 - Cool

# Architectural Finishes Stock Sheet Sizes and Cores

There are no minimums for stock material

	CODE	GLOSS	THICKNESS (mm)	WIDTH/LENGTH/CORE								BRAKE METAL 0.032"
				50"				62"				
				146		196		146		196		
				PE	FR	PE	FR	PE	FR	PE	FR	
<b>SOLID COLORS</b>												
BONE WHITE	4BNT	30	4	X		X	X	X		X	X	X
OYSTER	4CRT	30	4			X				X	X	X
MIST WHITE	4MST	30	4	X		X	X	X		X	X	X
ALUMINUM GREY	4AGT	30	4			X				X	X	X
BGY GREY	4BGY	50	4							X		X
BRONZE	4JBR	30	4				X				X	X
TOB BLACK	4TOB	15	4							X198"		X
<b>MICA COLORS</b>												
PLATINUM	4OPT	50	4	X		X	X	X		X	X	X
ANODIC CLEAR	4MNC	30	4			X	X			X	X	X
CHAMPAGNE	4MCU	30	4			X	X			X	X	X
GREY	4MZG	50	4							X		X
MFS GREY	4MFS	30	4								X	
<b>METALLIC COLORS</b>												
BSX SILVER	4BSX	30	4			X				X	X	X
SILVER	4SMX	30	4	X		X	X	X		X	X	X
CHAMPAGNE	4CMX	30	4	X		X	X	X		X	X	X
MEDIUM BRONZE	4MBX	30	4	X		X	X	X		X	X	X
DARK COPPER	4DCX	30	4							X	X	X
<b>NATURAL METALS</b>												
STAINLESS	84HL		4			X39.4"						
ZINC	8AZZ		4			X38"						
COPPER	8C12		4			X38"						
<b>ANODIZED</b>												
CLEAR	1CLR		4			X148"		X198"		X148"		X198"

Any width/length/core combination that is not listed requires custom production and the appropriate guidelines apply

For additional information, samples or a list of ALPOLIC® fabricators, please call 800-422-7270 or visit [www.alpolic-americas.com](http://www.alpolic-americas.com).

**ALPOLIC®**  
MATERIALS

*Let's Build*

401 Volvo Parkway, Chesapeake, VA 23320  
Telephone: 800-422-7270 | Facsimile: 757-436-1896  
[www.alpolic-americas.com](http://www.alpolic-americas.com) | e-mail: [info@alpolic.com](mailto:info@alpolic.com)

 MITSUBISHI CHEMICAL COMPOSITES AMERICA, INC.

Mitsubishi Chemical Composites America, Inc. reserves the right to change or delete information herein without prior notice.

©2017 Mitsubishi Chemical Composites America, Inc. All rights reserved. ALPOLIC® is a registered trademark of Mitsubishi Chemical Corporation. LUMIFLON® is a registered trademark of Asahi Glass Company. Kynar® is a registered trademark of Arkema, Inc.

\*The LRV (Light Reflectance Value) noted represents a percentage of the light energy, in the visible spectrum, that is reflected by the surface being measured. This value is defined in ASTM C609 as the Y value as measured in an XYZ/Yxy color space.

\*The SRI (Solar Reflectance Index), as defined by ASTM E1980 using 12 W/m²K values incorporates reflectivity, or how well a material reflects back rather than absorbing radiant energy, and emissivity or how well a material radiates heat that was absorbed back into the environment.

The values noted on this card are typical values for these colors. Lot to lot variation will slightly affect the LRV and SRI values. Colors shown are as close to actual colors as allowed by the printing process.

LITAP3001 Rev.12  
March 2017

